

Dell
USB Easy Transfer Cable for Windows

User Guide



Content

Introduction

Setup

FAQ / Troubleshooting

Introduction

Dell USB Easy Transfer Cable for Windows
User Guide

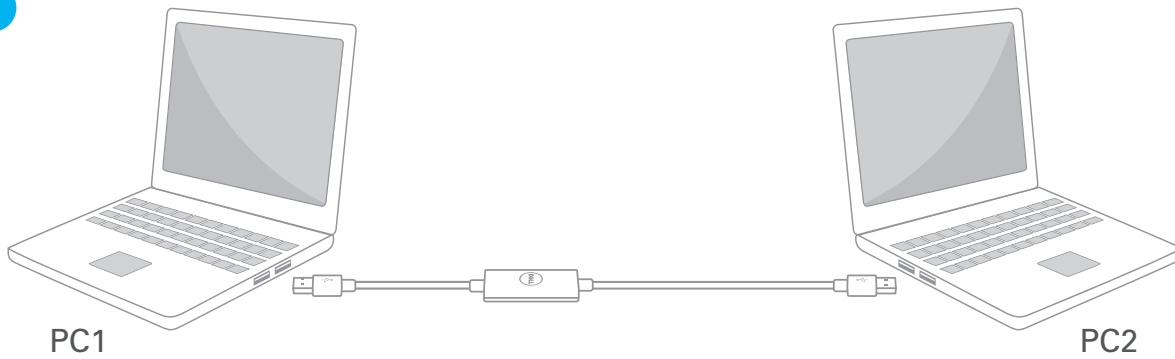
Overview

Congratulations on the purchase of your new Dell USB Easy Transfer Cable for Windows. This user guide has been developed to provide information that will assist you in the setup and operation of your new easy transfer cable.

The Dell USB Easy Transfer Cable for Windows can be used on PC systems running Windows 2000, Windows XP, Windows Vista, Windows 7 and Windows 8. Both operating systems must have a USB interface. This product can be used for transferring files, sharing data and synchronizing email and other important document files between two computers.

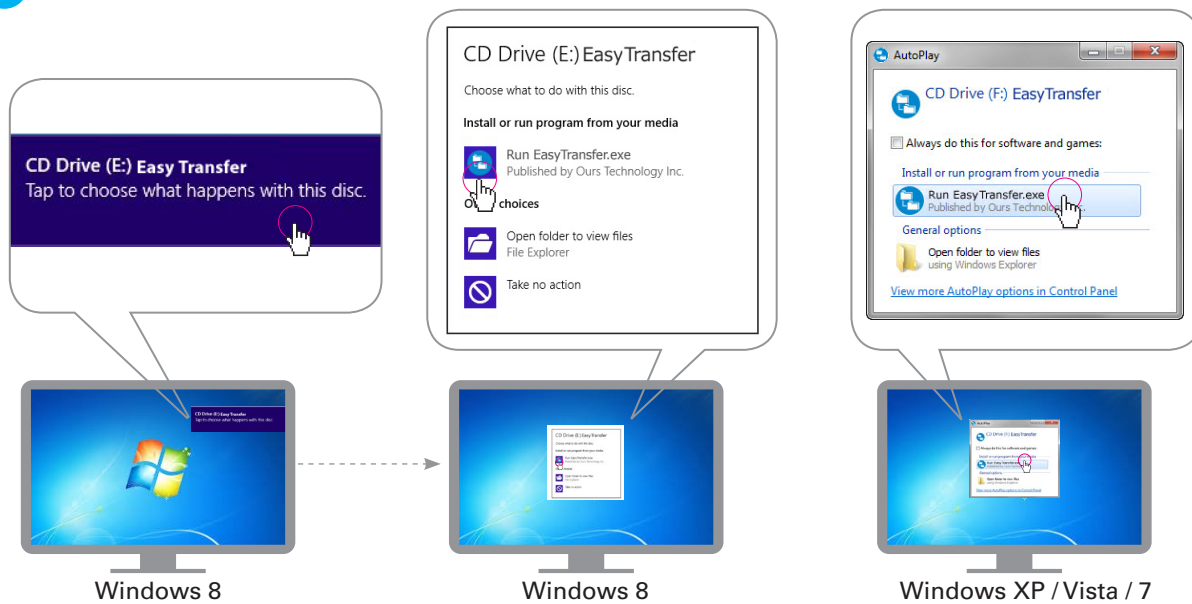
Set Up

1



Plug either end of the USB Transfer Cable into PC 1 and the other end into PC 2.

2



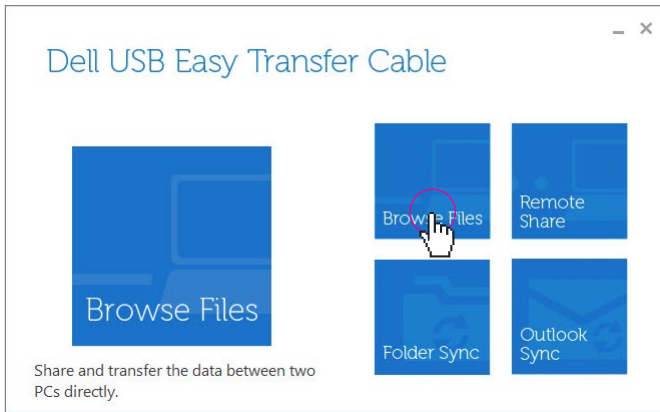
The software will automatically be detected and will open the pop-up window to begin running the software.

Note: If a pop-up window does not automatically appear, use the following path to open the software manually: Start Menu > Computer (My Computer) and double click on the CD drive.

USB LED Behavior		
Off	Slow blinking	Fast blinking
Disconnected	Standby	Data transmission

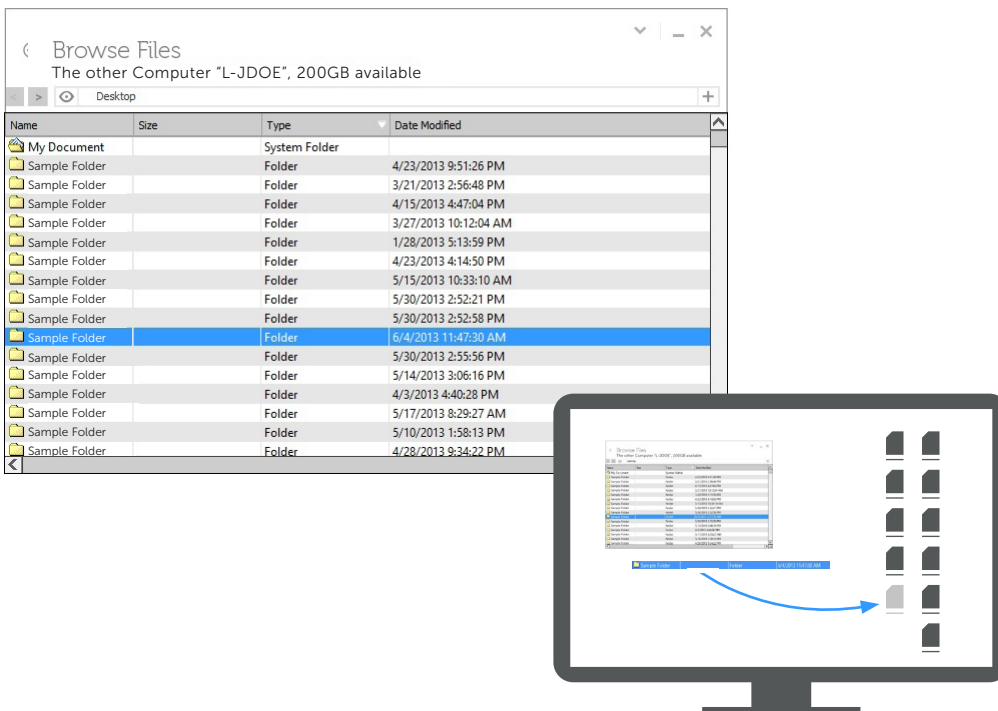
Browse Files

1



Click **Browse Files** button on the main menu window on both PCs.

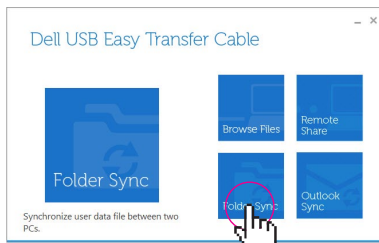
2



Locate the Files/Folders that you wish to transfer in the **Browse Files** window, then click and drag onto the desktop of the PC.

Folder Sync

1

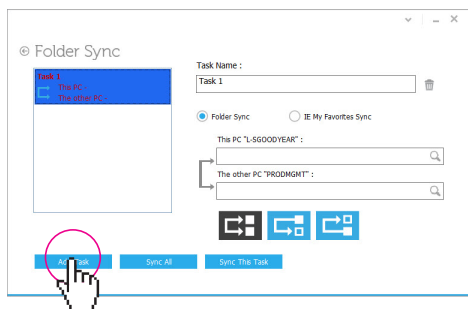


PC1

Click the **Folder Sync** button on the main menu window on both PCs.

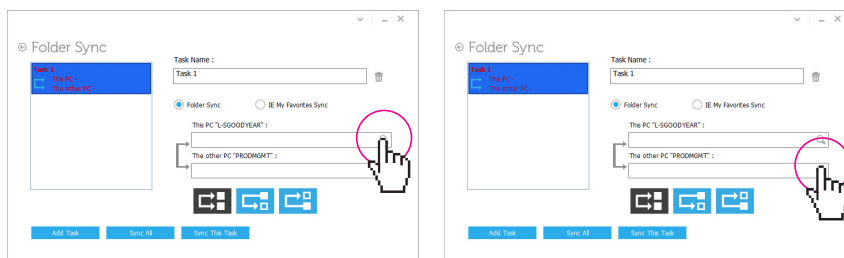
Note: The PC that is clicked first will be the PC that the next steps will be completed on.

2



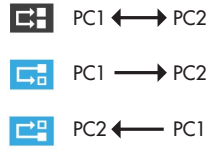
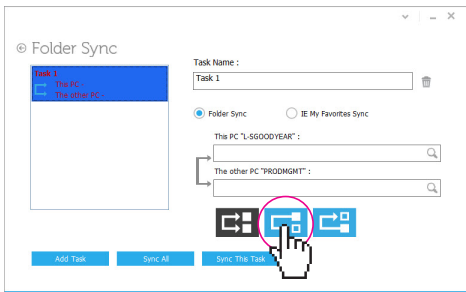
Click **Add Task**.

3



Choose the folder that you wish to sync and the destination.

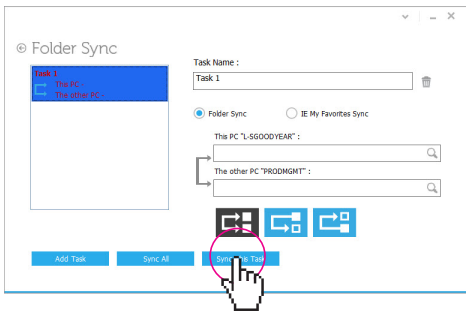
4



There are three options for Folder Sync:

- Sync folders between both PCs
- Transfer from PC 1 to PC 2
- Transfer from PC 2 to PC 1

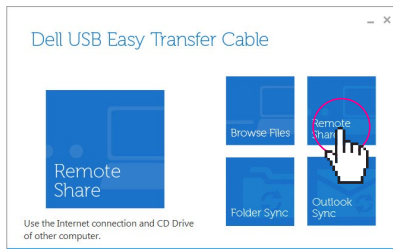
5



Click on **Sync this Task** or **Sync All** if you have more than one task.

Remote Share

1

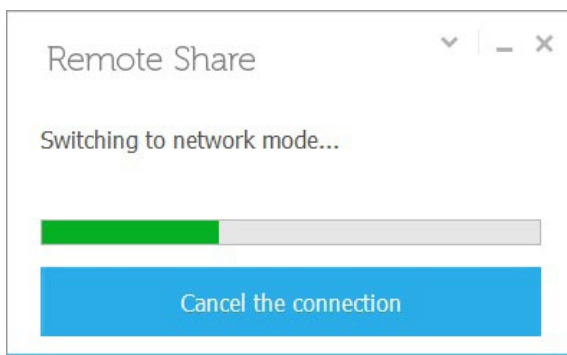


PC1

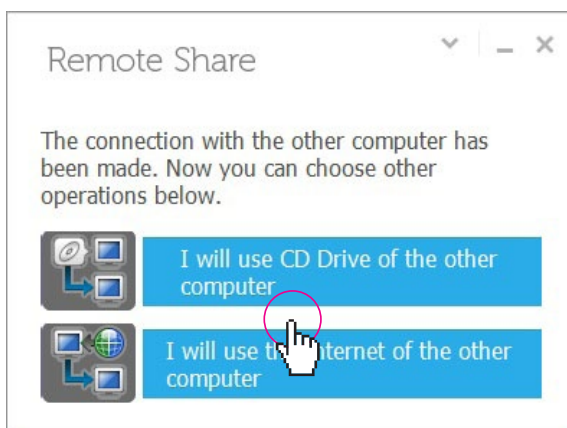
Click the **Remote Share** button on the main menu window on both PCs.

Note: The PC that is clicked first will be the PC that the next steps will be completed on.

2



3



Choose either the CD drive or Internet connection that will be shared.

4

The other computer's CD Drive has been shared, you can open Windows Explorer to use it.

Open Windows Explorer

OK

5

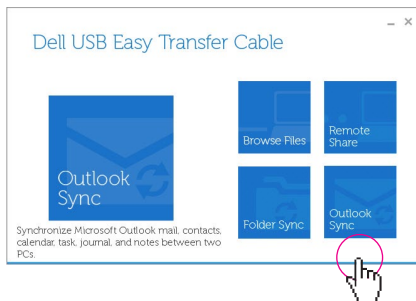
Remote Share



Internet connection is sharing on the other computer, please wait...

Outlook Sync

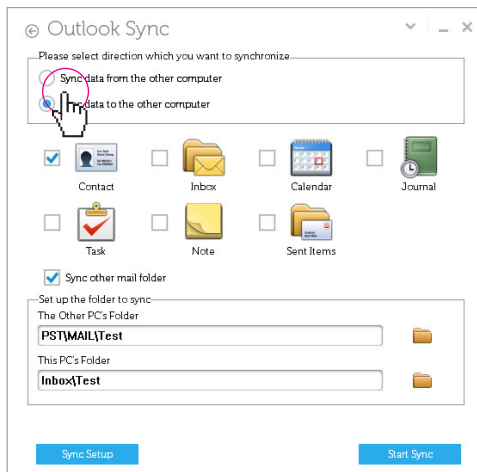
1



Click the **Outlook Sync** button on the main PC.

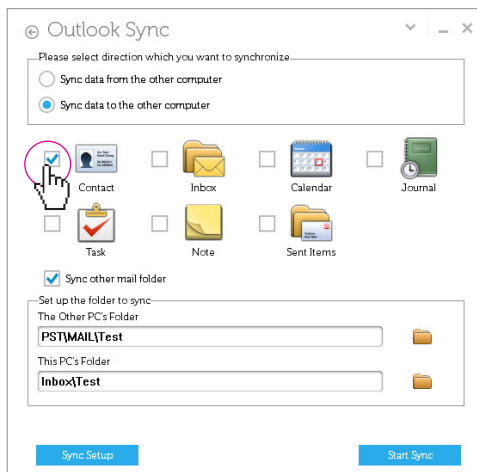
Note: The PC that is clicked first will be the PC that the next steps will be completed on.

2



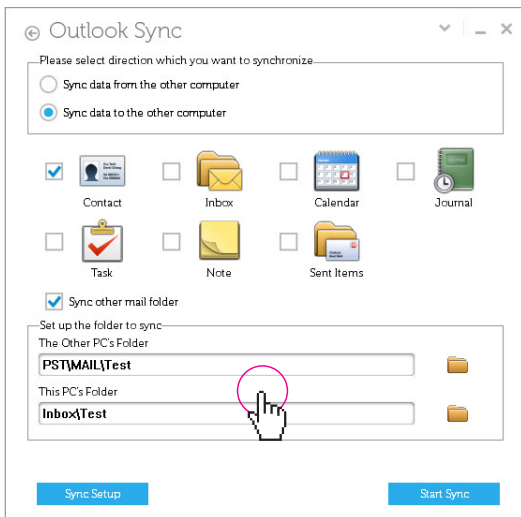
Choose which direction the files/data will be synchronized.

3



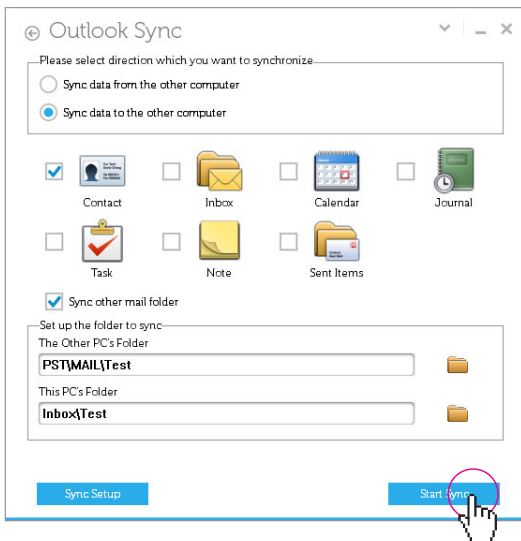
Choose which items you wish to be synchronized.

4



Choose the folder on the remote PC and the local PC that these items/files will be sent to.

5



Click **Start Sync** to synchronize the Outlook files selected.

FAQ's

FAQ:

1. Can I transfer programs like Microsoft Word or Excel?
 - a. No. This cable can only transfer files or folders. It will not transfer programs that have been installed on either computer.
2. How do I transfer my Internet Explorer favorites to the new computer?
 - a. Select the **Folder Sync** option and select the **IE My Favorites Sync**.
3. How do I transfer Firefox or Google Chrome favorites (not IE) to the other computer?
 - a. You would need to export the favorites.
 - b. Transfer that file to the new computer.
 - c. Select **Import Favorites** and then select the file that you transferred to the new computer.
4. Does Outlook have to be installed on both computers to do Outlook Sync?
 - a. Yes. Outlook will need to be installed on both the new and old computer in order to perform Outlook Sync.
5. What versions of Office Outlook does Outlook Sync support?
 - Office 2003 Service Pack 3
 - Office 2007 Service Pack 1
 - Office 2010
 - Office 2013
6. Does it matter which USB connector of the cable is connected to each of the PC's?
 - a. No. The cable is designed to communicate bi-directionally.
7. How do I run the software if the Auto-Run window does not appear when plugging in the cable?
 - a. Click **Start > Computer (My Computer** in XP) and double click on the CD drive (i.e. E:) Transfer cable.
8. I do not see all of my files on the **Browse Files** window.
 - a. Make sure the proper destination is identified in the file path to the right of the "eye" icon in the Browse Files window.

FAQ's continued. . .

9. How do I re-start the software if it is closed?
 - a. There are three ways to re-start the software
 - i. Click the icon in the system tray.
 - ii. Unplug and re-plug the cable.
 - iii. Click **Start > Computer (My Computer)** in XP and double click on the CD drive (i.e. E:) Transfer cable.
10. What is the function of Dock in Browse Files?
 - a. You can use Dock to transfer multi-files from different locations at once. The Dock is a temporary area for users to manage all the files you wish to copy and paste between computers. Once you finish collecting all the files you want to transfer, you can then drag the files to or from the computers.
11. Why does VirtualLink disk appear right after the Easy Transfer Cable is plugged into the computer?
 - a. Please ignore this VirtualLink disk. It is an assistive virtual disk with programs to accomplish the Easy Transfer functions.
12. In Folder Sync, what does **Sync data both ways** mean?
 - a. It means that files in both the remote and local directories specified will be synced up. After the sync, both directories will have identical files and structures. If the remote and local filenames are the same, the newer file will overwrite the older one, indicated by their file timestamps.
13. In Folder Sync, what does **Sync data from this PC to the other PC** mean?
 - a. It means that the local directory structure and files will be copied to the remote directory. If the remote directory has filenames same as those in the local directory, those remote files will be overwritten by the local ones.
14. Do anti-virus applications affect the operation of Remote Share?
 - a. Some anti-virus applications can cause failure to remote sharing. If such issues happen, please disable the anti-virus applications when using Remote Share.
15. Will the firewall of the operating system affect the operation of Remote Share?
 - a. It may cause Remote Share to stop functioning because the firewall blocks the communication between the computers.

FAQ's continued. . .

16. When Remote Share is trying to connect, how can I solve the problem of **USB device can't be identified**?
 - a. If you get this error, please re-plug the Easy Transfer device into the computer and then launch Easy Transfer again.
 - b. If you cannot see the disk drive of the USB device on Windows Explorer, please re-start your computer.
17. Can I use Folder Sync or Outlook Sync while crossing languages of the operating system and time zones?
 - a. Yes, Outlook Sync can sync mail between two different languages for operating systems. The time difference on both computers must be less than 5 minutes apart.
18. How may anti-virus applications affect the operation of Outlook Sync?
 - a. If Outlook Sync is used when anti-virus applications are running on the computers, the synced emails' timestamps may be overwritten with the timestamps when the sync happens.
19. Why cannot the hidden files be synced between the computers?
 - a. To avoid unwanted overwriting of hidden system files, Folder Sync is designed not to sync hidden files between computers.

